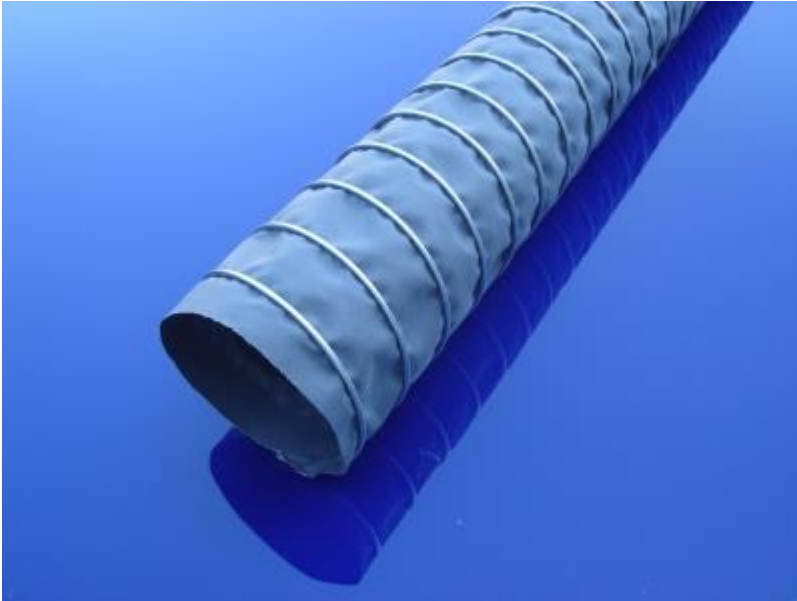


TECHNI CONNECT 12



High Temperature Exhaust Hose - Steel Wired Hose

Operating Temperature Range:

- 40 / + 175 C°

Features :

- Extremely flexible
- Improved temperature resistance
- Small bend radius
- Hardly inflammable
- Compressible to approx. 1:5 ratio

- Extremely lightweight
- Vibration proof

For use in:

- Granule dryers
- Air conditioning
- Ducting of hot and cold air
- Vehicle construction
- Exhaust equipment
- Low pressure application
- Standard hose for industry
- Engine construction

Length: 5 metres (10 metres on application)

PART CODES SIZES & TECHNICAL SPECIFICATIONS

PRODUCT CODE	INNER DIAMETER	WORKING PRESSURE	VACUUM	BENDING RADIUS	WEIGHT
<i>Units</i>	<i>mm</i>	<i>bar</i>	<i>Mbar</i>	<i>mm</i>	<i>gr. / mt.</i>
12-01-100	100	0,512	1000	60	0,65
12-01-110	110	0,48	850	65	0,7
12-01-120	120	0,362	700	70	0,7
12-01-125	125	0,33	650	75	0,82
12-01-130	130	0,275	600	76	0,83
12-01-140	140	0,25	500	85	0,84
12-01-150	150	0,225	450	92	0,9
12-01-160	160	0,21	400	95	0,9
12-01-170	170	0,188	350	100	0,93
12-01-175	175	0,185	320	105	0,98
12-01-180	180	0,17	310	110	1
12-01-200	200	0,15	250	120	1
12-01-215	215	0,13	210	150	1,28
12-01-225	225	0,114	200	160	1,4
12-01-250	250	0,102	150	175	1,58
12-01-275	275	0,078	150	190	1,88
12-01-300	300	0,069	100	209	2,12
12-01-315	315	0,061	100	220	2,13
12-01-325	325	0,06	90	230	2,21
12-01-350	350	0,058	80	228	2,48
12-01-375	375	0,051	70	261	2,87
12-01-400	400	0,048	60	279	3,11
12-01-450	450	0,045	50	362	3,63
12-01-500	500	0,043	40	398	4,12
12-01-550	550	0,042	35	441	4,58
12-01-600	600	0,04	30	480	5,12
12-01-700	700	0,032	20	563	6,02
12-01-800	800	0,023	15	641	7,07
12-01-900	900	0,015	10	724	7,86